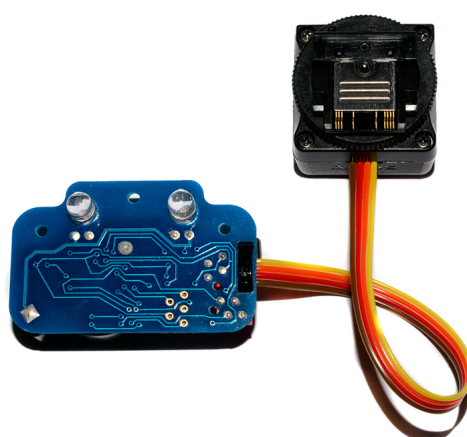
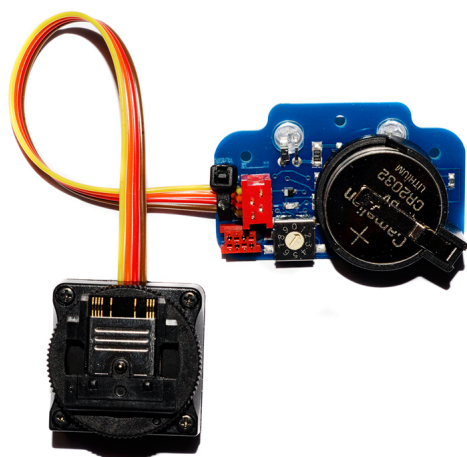
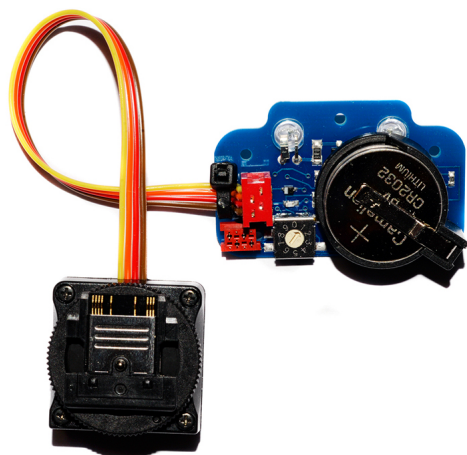
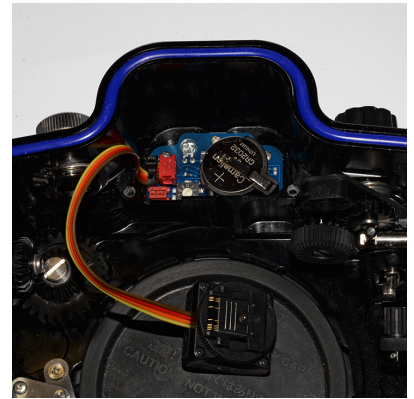


11049-HSS TTL-Converter for Sony for Sea&Sea underwater housings MDX-?U, A7II, A7III, A7IV, A1.





Optoelectronic TTL-Converter for SONY for SEA&SEA MDX-?U, A7II, A7III, A7IV, A1 and other underwater housings

Rating: Not Rated Yet

Price:

Variant price modifier:

Base price with tax:

Price with discount:

Salesprice with discount:

Sales price: \$495.00

Sales price without tax: \$495.00

Discount:

Tax amount:

[Ask a question about this product](#)

Manufacturer: [UW Technics](#)

Description #11049-HSS Optoelectronic TTL-Converter for SONY for SEA&SEA MDX-?U, MDX-A7II, A7III, A7IV, A1 and other underwater housings. Compatible underwater strobes: Inon S-220 / Z-330 / Z-240 / D-200, Sea&Sea YS-D1 / YS-D3 Mark II/ YS-D3 DUO / YS-250, Ikelite DS-230 / DS-162 / DS161 / DS160 / DS-125, Subtronic Pro-270 / Pro-160 (by electronic sync cord), Retra Pro MAX (including HSS). Onboard outputs: 2 optical + 2 electric. Powerful LEDs are included. Optional electric socket adapters for Sea&Sea Nikonos bulkhead rear side (for electric sync) are not included with the standard kit (Sea&Sea original parts, should be purchased separately). Compatible Sea&Sea underwater housings: MDX-a7II,a7III, a7IV, a1 and others (all models of housings that provide for the installation of the original Sea&Sea #50139 TTL Converter).

Reviews

There are yet no reviews for this product.