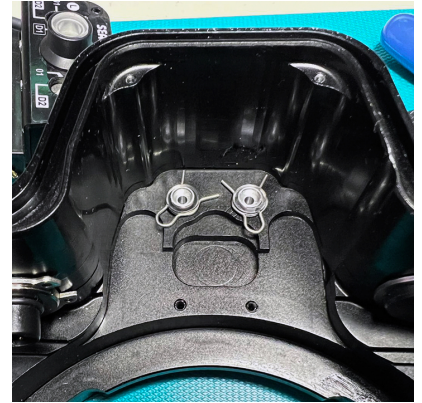


11047-HSS TTL-Converter for CANON for SEA&SEA MDX housings





Optoelectronic TTL-Converter for CANON for SEA&SEA MDX housings

Rating: Not Rated Yet

Price:

Variant price modifier:

Base price with tax:

Price with discount:

Salesprice with discount:

Sales price: \$520.00

Sales price without tax: \$520.00

Discount:

Tax amount:

[Ask a question about this product](#)

Manufacturer: [UW Technics](#)

Description #11047 Optoelectronic TTL-Converter for CANON for SEA&SEA MDX housings. Product is developed for installation on the place of original Sea&Sea "Optical YS-Converter", mounting by 2 screws in the top front part. Compatible underwater strobes: Inon Z-330 / Z-240 / S-220 / D-200, Sea&Sea YS-D1 / YS-D3 Mark II / YS-D3 DUO / YS-250, Ikelite DS-232 / DS-230 / DS-162 / DS161 / DS160 / DS-125, Subtronic Pro-270 / Pro-160, Retra Pro MAX (including HSS), Marelux APOLLO III V2.0 (including HSS), Marelux APOLLO-S (including HSS).. Sea&Sea original electric bulkhead (Nikonos-V) can be connected to board as well. Compatible Canon photo cameras : 7d, 7dMkII, 6dMkII, 80d, 750d, 5dMkII, 5dMkIII, 5dMkIV, 5dSR, 1dX, 1dXMkII, 1dXMkIII, R, R5, R7, R6II. Sea&Sea original electric bulkhead (Nikonos-V) can be connected to board as well, requires an adaptor UW Technics #91597.

Reviews

There are yet no reviews for this product.