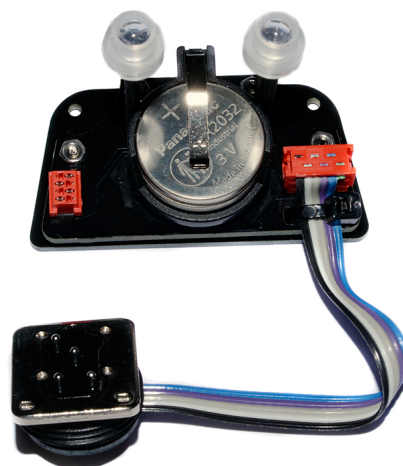
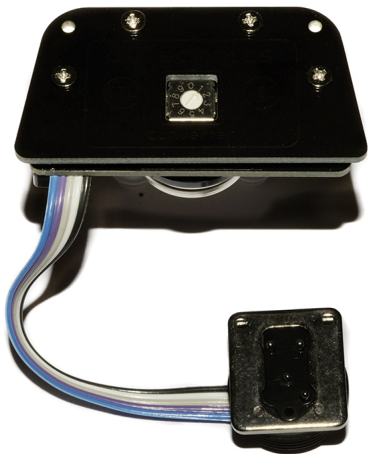
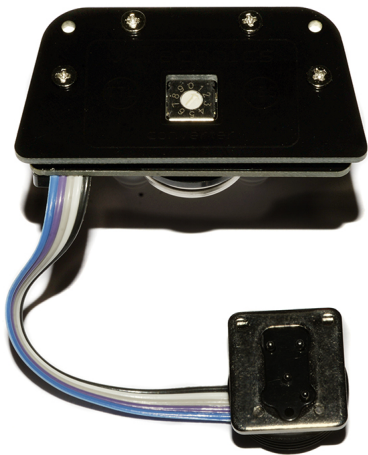
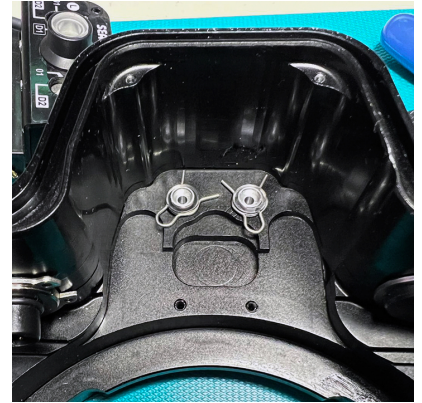


11048-HSS TTL-Converter for NIKON for SEA&SEA MDX housings





Optoelectronic TTL-Converter for NIKON for SEA&SEA MDX housings

Rating: Not Rated Yet

Price:

Variant price modifier:

Base price with tax:

Price with discount:

Salesprice with discount:

Sales price: \$520.00

Sales price without tax: \$520.00

Discount:

Tax amount:

[Ask a question about this product](#)

Manufacturer: [UW Technics](#)

Description #11048 Optoelectronic TTL-Converter for NIKON for SEA&SEA MDX housings. Product is developed for installation on the place of original Sea&Sea Optical YS-Converter, mounting by 2 screws. Compatible underwater strobes: Inon Z-240/ Z-330/ S-220/ D-200, Sea&Sea YS-D1 / YS-D3 Mark II / YS-D3 DUO / YS-250, Ikelite DS-232 / DS-230 / DS-162 / DS161 / DS160 / DS-125, Subtronic Pro-270 / Pro-160, Retra Pro MAX (including HSS), Marelux APOLLO III V2.0 (including HSS), Marelux APOLLO-S (including HSS). Sea&Sea original electric bulkhead (Nikonos-V) can be connected to board as well, requires an adaptor UW Technics #91597.