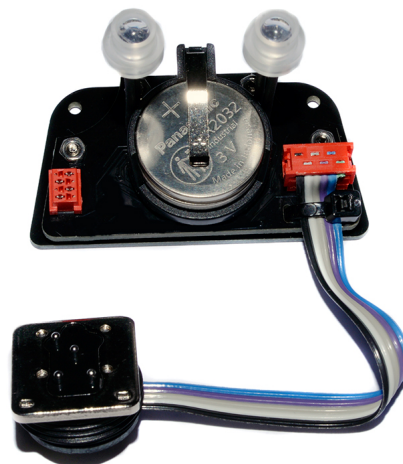
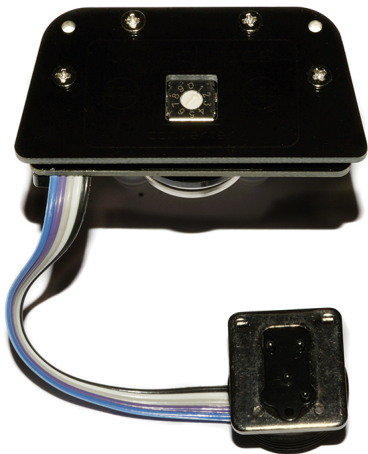
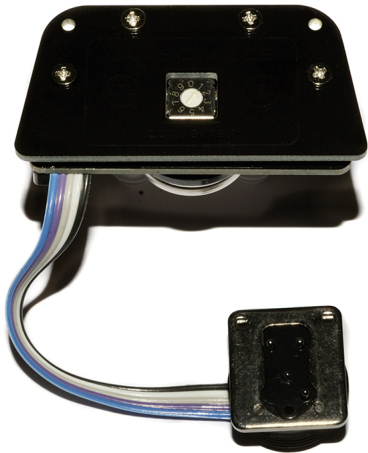
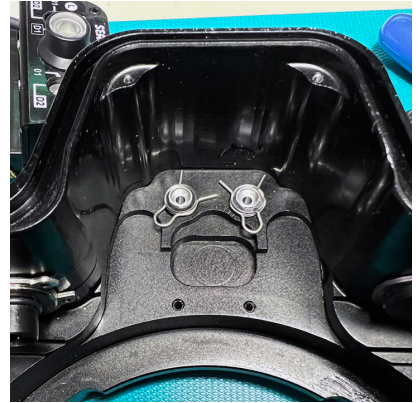


## 11048-HSS TTL-Converter for NIKON for SEA&SEA MDX housings





Optoelectronic TTL-Converter for NIKON for SEA&SEA MDX housings

Rating: Not Rated Yet

**Price:**

Variant price modifier:

Base price with tax:

Price with discount:

Salesprice with discount:

Sales price: \$520.00

Sales price without tax: \$520.00

Discount:

Tax amount:

[Ask a question about this product](#)

Manufacturer: [UW Technics](#)

Description #11048 Optoelectronic TTL-Converter for NIKON for SEA&SEA MDX housings. Product is developed for installation on the place of original Sea&Sea Optical YS-Converter, mounting by 2 screws. Compatible underwater strobes: Inon S-220 / Z-330 / Z-240, Sea&Sea YS-D1 / YS-D3 Mark II / YS-D3 DUO / YS-250, Ikelite DS-230 / DS-162 / DS161 / , DS160 / DS-125, Subtronic Pro-270 / Pro-160, Retra Pro X (including HSS). Sea&Sea original electric bulkhead (Nikonos-V) can be connected to board as well, requires an adaptor UW Technics #91597.

## Reviews

There are yet no reviews for this product.